



Plantation Prestige 2019
Commercial Furniture



Plantation Prestige

Commercial Furniture



FURNITURE

- Frames are constructed of high strength tubular aluminum and steel.
- Most all dining, side and bar seating is stackable, an excellent characteristic when furniture is stored during the off-season.
- All furniture frames are warranted by Plantation Prestige for 3 years. Please visit plantationprestige.com for more information.
- Our furniture features fully-welded frames for strength and stability.
- Metal furniture is electrostatically powder coated to resist corrosion, chipping, scratching and ultraviolet rays.



POOL SIDE

- All furniture for poolside is made of aluminum frames, keeping it light for easy mobility around the pool. Aluminum will not rust when used in the outdoor environment.
- Our slings are Textilene; which is a woven mesh weave material made of strong polyester yarns that are individually coated with PVC, specifically designed for outdoor use. Textilene is a very durable fabric made specifically for the outdoors. This product is great for poolside because the fabric doesn't retain much heat, making it cooler than most other fabrics used under the sun for relaxation.
- All chairs and chaise loungers are made to stack for easy storage and clean up.
- All of our frames are warranted by Plantation Prestige for 3 years. Please visit plantationprestige.com for more information.



FENCING

- Fencing panels are made of heavy duty commercial grade solid steel, rails and pickets are fully welded.
- Connecting and end posts are made with a durable, heavy gauge tubular steel and are fully welded.
- All fencing components are electrostatically primed and powder coated to resist corrosion, peeling or chipping.
- Fencing is portable, designed to create unique angles if desired, easy assembly and can be secured into the surface if desired.

ADDITIONAL PRODUCTS

- Several varieties of umbrellas and bases to suit practically any commercial application.
- Customization of umbrellas is available using Sunbrella® fabrics or by adding your logo for optimal visibility.
- Many chairs come with an optional cushion made with commercial-grade Sunbrella® fabric.
- Pyramid heaters, as well as the Charleston Fire Table provide a warmth and elegant design to illuminate the environment.





Plantation Prestige Commercial Furniture is proud to offer our line of commercial and hospitality furnishings. Plantation Prestige Commercial Furniture is dedicated to providing superior quality furnishings to the commercial and hospitality industry with a commitment to Design, Quality, Service and Execution. Plantation Prestige Commercial Furniture brings years of experience at making quality outdoor furniture to the commercial and hospitality market.

We are dedicated to providing fresh innovative designs that meet the space and aesthetic needs of our customers. Plantation Prestige Commercial Furniture has an in-house design team with many years of design and fabricating experience. We travel the world for design inspiration and have the capability to design custom products to fit your needs.

We are proud to introduce our 2019 line and look forward to servicing your furniture needs.



All Steel Frame Collections

Monaco

The Monaco side chair and barstool offer a waterfall front edge design for a more comfortable feel when sitting in these pieces, scaled and designed to be great for that smaller space or café bistros.

* This collection is stackable!
Offered in charcoal and bronze finishes



2290700-04
Side Chair
20D X 18W x 33H



2290300-02
Bar Stool
16D X 18W x 43H

Rockport

The design of our Rockport collection supports and cradles the body in comfort and style. Constructed of commercial-grade materials for strength and powder coated for durability, the Rockport collection is an excellent choice for almost any commercial application.

* This collection is stackable!
Offered in charcoal, platinum and bronze finishes
Optional seat cushions available
#8412-04



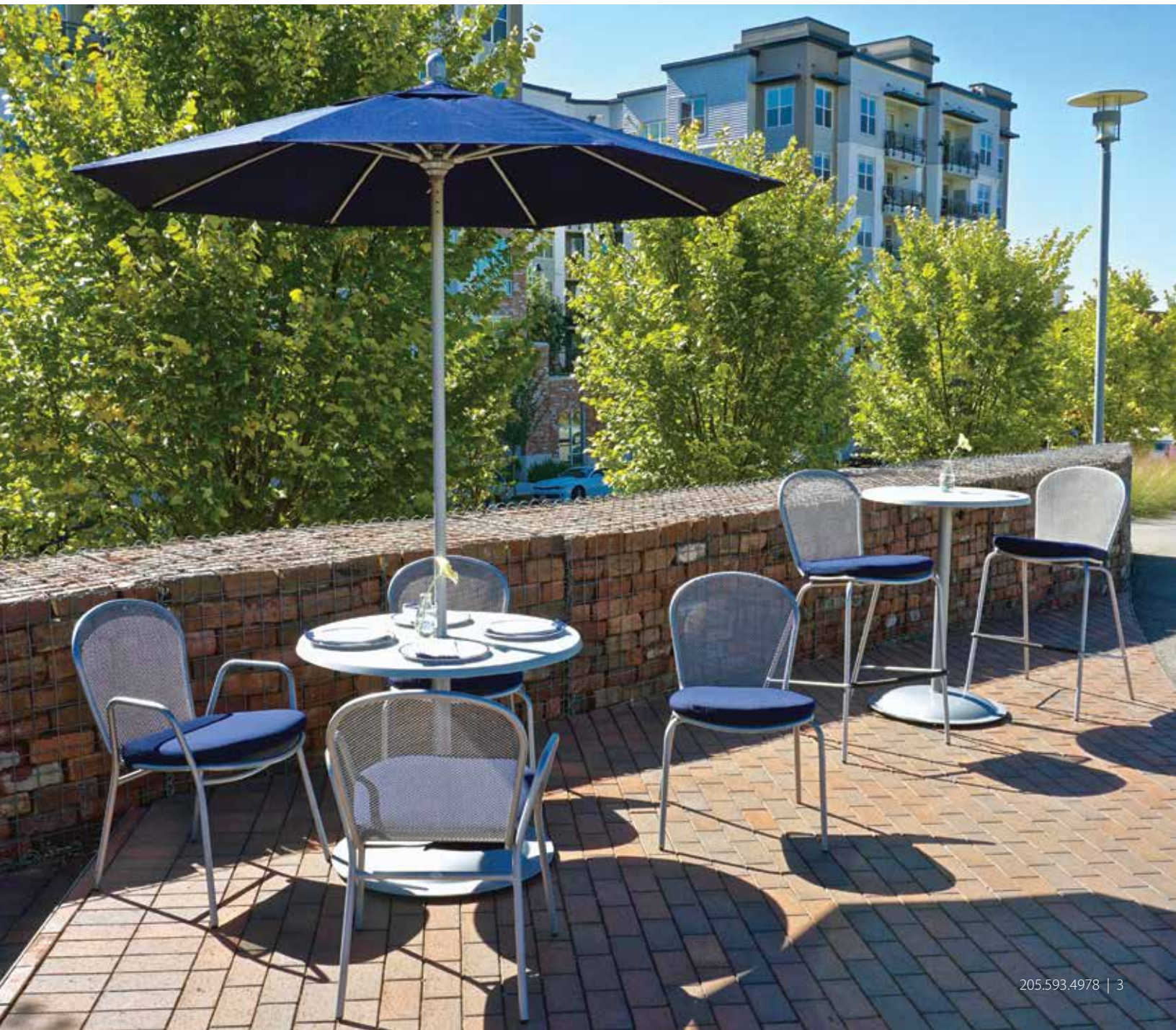
2041100-04
Dining Chair
26D X 22W x 33H



2040700-04
Side Chair
26D X 21.5W x 33H



2040300-02
Bar Stool
26D X 22.5W x 45H





Manhattan

Comfortable, stylish and modern are all adjectives describing our Manhattan dining chairs and bar stools to a "T"! The comfortable, curved seat and lumbar support offer great "sitability", and the sturdy construction and powder coated frames ensure that your investment will continue to look great and perform well for years to come.

* This collection is stackable!
Offered in charcoal and platinum finishes
Optional seat cushions available
#8912-04



2031100-04
Dining Chair
23.5D x 24.5W x 36.5H



2030300-02
Bar Stool
23.5D x 22.5W x 43H

Barkley *(shown on front cover)*

A wonderful pairing with modern to transitional commercial settings, the Barkley Collection features a curved seat and lumbar support for added comfort. Sturdy, commercial-grade materials and finish are designed to withstand heavy use and retain long-lasting appeal.

* This collection is stackable!
Offered in charcoal & bronze finish
Optional seat cushions available
#8812-04



2151100-04
Dining Chair
21.5D X 22W x 35H



2150700-04
Side Chair
21.5D X 18W x 35H



2150300-02
Bar Stool
26D X 21W x 44H

Newport

Everyday opulence abounds in our stylish Newport collection. Featuring delicately curved seat backs combined with sturdy, commercial-grade mesh, the Newport seating collection is a grand combination of durability, comfort and style.

* This collection is stackable!
Offered in charcoal finish
Optional seat cushions available
#8912-04



2241100-04
Dining Chair
24D X 24.5W x 37H



2240700-04
Side Chair
24D X 21W x 37H



2240300-02
Bar Stool
23.5D X 22.5W x 48H

Monroe

Featuring a lattice weave design, the Monroe collection is both comfortable and stylish. Each commercial-grade chair is individually powder coated for long-lasting beauty and longevity.

* This collection is stackable!
Offered in charcoal finish
Optional seat cushions available
#8912-04



2251100-0450
Dining Chair
23D X 24.5W x 37H



2250700-0450
Side Chair
23D X 20W x 37H



2250300-0250
Bar Stool
23.5D X 20W x 48H



Chelsea (pictured left)

Chelsea is a classic ladder back design with a bistro size mesh seat for comfort and style, a timeless classic piece for any outdoor setting, especially for small spaces.

* This collection is stackable!
Offered in charcoal and bronze finishes



2261100-04
Dining Chair
20D X 22W x 32H



2260700-04
Side Chair
16D X 18W x 32H



2260300-02
Barstool
20D X 18W x 43H

Montauk

The Montauk dining and side chair offers a transitional stylish design like its sister Manhattan, yet is still comfortable for any commercial setting and makes a great alternative for smaller spaces. The Manhattan bar stool is a great correlating piece to this new design.

* This collection is stackable!
Offered in charcoal and bronze finishes
Optional seat cushions available
#8812-04



2161100-04
Dining Chair
21D x 22.5W x 34H



2160700-04
Side Chair
21D x 18W x 34H



2030300-02
Bar Stool
23.5D x 22.5W x 43H
(Optional from Manhattan Collection)

Caredo

The Caredo dining chair offers great lumbar support for comfort and is stackable for easy out of the way storage. Is stylish and durable, will stand the test of time in any commercial setting.

* This collection is stackable!
Offered in charcoal, bronze, and iron grey finishes
Optional seat cushions available
#8712-04



2171100-04
Dining Chair
25D x 24W x 35.5H



2170300-04
Bar Stool
33D x 24W x 51H

Tuscany



Coming Summer 2019
2191100-0450

New for 2019

5 piece dining set in Caredo
(shown in iron grey on page 22)



All Aluminum Frames Collection

Madrid

Bring a bit of the exotic to your outdoor spaces with the Madrid collection! Featuring commercial-quality cast and extruded aluminum frame construction, this durable, lightweight collection is perfect for a wide variety of comfortable commercial settings.

- * This collection is stackable!
- Cast & extruded aluminum with chocolate finish
- * This collection has coordinating tables shown on page 22



8751100-0440
Dining Chair
23W x 25D x 34H



8750700-0440
Side Chair
20.5W x 25D x 34H

Sedona (pictured left)

The Sedona collection provides a very clean look with just enough of a design to add a little extra to your dining area. The stamped chair back and matching seat provide comfort and cooling, while feeling durable and strong. This collection is an all aluminum frame construction making it lightweight for easy storage.

- * This collection is stackable
- * Offered in Olympian



8181100-0465
Dining Chair
33D x 25W x 39H



8180700-0465
Side Chair
30D x 22W x 40H





Aruba

The Aruba dining chair is a very attractive, stylish piece to add to your outdoor area; offering two color options for a variety of looks. The design features a woven resin secured to an all-aluminum frame; yet, gives the appearance of wood with it's hand applied finish. The chairs are stackable and light-weight for easy storage.

* This collection is stackable!

Aruba Espresso (an espresso finish with mocha weave)

Aruba Driftwood (a driftwood finish with ash weave)

* This collection has coordinating tables shown on page 22



Aruba Espresso Dining Chair
8251100-0490
23.5D X 21.5W x 31.5H



Aruba Driftwood Dining Chair
8251100-0440
23.5D X 21.5W x 31.5H

Antigua

A sophisticated design featuring an all-aluminum frame with black textilene fabric for a comfortable seat and back. Textilene is an open weave, highly durable outdoor material, with built in UV stabilizers, allowing the fabric to breathe the sunlight. Makes fabric a cool seat to sit on and withstand the test of time for many years. Chairs are stackable, making it easy to store away when needed.

* This collection is stackable!

Cappuccino with black textilene



2131100-0480
Dining Chair
26D X 22W x 33H



2130700-0480
Side Chair
26D X 21.5W x 33H



2130300-0280
Bar Stool
26D X 22.5W x 45H

Cayman

A timeless classic design featuring a variegated coffee and brown resin weave, stylish and traditional for any outdoor setting. Great for any outdoor area especially along the coast or more tropical regions. The all-aluminum frame has a hand applied finish, giving the appearance of wood, but in fact is metal and withstand the outdoor elements very well. Chairs are stackable, making it easy to store away when needed.

* This collection is stackable!

Cappuccino finish with coffee & beige weave



2141100-0480
Dining Chair
26D X 22W x 33H



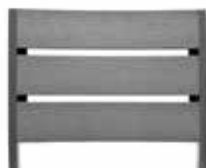
2140700-0480
Side Chair
26D X 21.5W x 33H



2140300-0280
Bar Stool
26D X 21.5W x 45H



Durango Collection



Gunmetal Frame/Grey Faux Wood



Platinum Frame/Teak Faux Wood



Bronze Frame/Teak Faux Wood



New for 2019
Black Frame/Barnwood

Durango

The Durango is a refined rustic collection, featuring a faux wood with an aluminum frame. Not only does it have a classic slat, but combines a curved ergonomic design for comfortable seating. It's handsome presence still affords a light-weight, stackable chair for easy storage.

* This collection is stackable!

Gunmetal frame with grey faux wood slats

Platinum frame with teak faux wood slats

Bronze frame with teak slats

New color! Black frame with barnwood slats

* This collection has coordinating tables shown on page 22



8771100-04
Dining Chair
23D X 23W X 36H



8770700-04
Side Chair
23D X 18.5W X 36H



8770300-02
Bar Stool
23D X 18.5W X 47H

Durango Weave

The Durango Weave is an appealing addition to our Durango collection. The aluminum frame encompasses an elegant all-weather weave to give the chair texture and design. This collection would look great with the Durango tables shown on page 22.

* This collection is stackable

* Offered in grey weave



8761100-0455
Dining Chair
23D X 23W X 36H



8760700-0455
Side Chair
23D X 18.5W X 36H



8760300-0255
Bar Stool
23D X 18.5W X 47H



Durango Weave shown with Aruba table



Durango Deep Seating

The Durango Deep Seating collection is designed to create a comfortable option, styled in a modern, yet subtle grey wicker to upgrade your outdoor space. Each seating piece fastens easily to another, offering multiple configurations to furnish your outdoor area accordingly. The Durango Seep Seating pieces are constructed of an all-weather woven wicker, wrapped around an all-aluminum, highly durable frame for the outdoors.

* Sunbrella® cushions included with limited colors available for an upcharge (see page 32).

Shown in Canvas Granite.

* Decorative pillows not included.



Right Hand Section
8770500-015402
37.4D X 29.5W X 34.6H



Corner Section
8770100-015402
37.4D X 37.4W X 34.6H



Left Hand Section
8770400-015402
37.4D X 29.5W X 34.6H



Middle Section
8770200-025402
37.8D X 25.8W X 34.6H



Wicker End Table
8771836-0155
18D X 36W X 17H



Wicker Coffee Table
8772746-0155
27D X 46W X 17H



Lounge Chair
8770600-01
37D x 34W x 35H



Double Chaise Lounge
8770800-01
84D x 61.5W x 36H



Chaise Lounge
8770900-01
81D x 29W x 21H



Durango Coffee Table
8772747-01
27D X 47W X 18H



Durango Side Table
8772121-01
21D X 21W X 18H



Key Largo

The timeless design of classic wicker has been recreated with our beautiful Key Largo deep seating. Made of a woven all-weather resin, and crafted into a unique arrangement, with many seating possibilities. Beauty and functionality at its best with built-in storage within the armrest, and each piece is sold separately to meet your outdoor needs. Shown here with our Charleston Fire Table. Fully equipped with gas burner and storage for propane tank. Simple turn of the dial to illuminate your outdoor area.

* Sunbrella® cushions included with limited colors available for an upcharge (see page 32).

Shown here in Sesame Linen.

* Decorative pillows not included



Triangular Storage Section
(with storage)
8782134-01
34D x 21W x 32H



Curved Sectional
8780200-02
34D x 47W x 32H



Charleston Fire Table
8742500-01
47W x 27H



Corner Section
8790100-01
35D x 35W x 34H



Middle Section
8790200-02
35D x 31W x 34H



Coffee Table
8794040-01
40D x 40W x 20H

Savannah

The new Savannah collection is designed with a hand-woven, all-weather wicker that won't fade or split, leaving you with a worry-free solution all year long. The frame is constructed of commercial grade tubular aluminum, therefore rust free and lighter weight for easier mobility. This collection affords you many options and varieties within your outdoor seating space.

The aluminum chat table has a durable finish that mimics a rich wood stain.

* Sunbrella® cushions included with limited colors available for an upcharge (see page 32). Shown here in Henna.

* Decorative pillows not included.







Catalina

The classic Catalina collection captures the feel of a sun filled day, lying in the warm summer breeze, with such simplistic sophistication and beauty. Using all-weather wicker, with its unique gradient of light grey color, permits this collection to stand out in any outdoor area.

* Sunbrella® cushions included with limited colors available for an upcharge (see page 32). Shown here in Cast Ash.



Lounge Chair
8550600-02
37D x 28W x 35H



Sofa
8551200-01
37D x 75W x 35H



Swivel Chair
8551400-02
37D x 28W x 35H



Side Table (with storage)
8552626-01
26D x 26W x 21H



Coffee Table (with storage)
8552842-01
42D x 28W x 18H



Both Side Table and
Coffee Table feature a
storage compartment



Sonoma Collection

The newest addition to our hospitality line draws inspiration from classic pieces yet adds cleverly designed armrests to enhance the already eye catching sleek lines. This collection features a weather-resistant mesh textile, constructed from lightweight hand welded heavy gauge aluminum framing with powder coating for an extra layer of protection from rust and nature's elements. Uniquely paired with light, yet stylish, tropical colors, this understated hospitality collection will showcase you and your guests in both design and social paradise.



Napa Collection

Sonoma

Bronze frame / Desert Sand sling



Dining Chair
4251100-0420
27D x 23W x 38H



Chaise Lounge
4250900-0220
84D x 32 x 25H

Milan

Graphite frame / Platinum sling



Dining Chair
4281100-0456
24.5D x 22W x 33.5H



Chaise Lounge
4280900-0256
83D x 29W x 22.5H

Napa

Graphite frame / Slate sling



Dining Chair
4261100-0456
26D x 24.5W x 38H



Chaise Lounge
4260900-0256
83D x 32W x 22H

Caribe

Textured White frame / Navy Pin Stripe sling



Dining Chair
4271100-0452
24.5D x 23.5 x 34



Chaise Lounge
4270900-0252
83D x 32W x 23H

Tables |

Madrid Dining Table
8753600-0140 36W x 29H
8754200-0140 42W x 29H
(chocolate finish only)
with umbrella hole



Aruba Dining Table
8250000-01 36D x 36W x 29H
Top sold with fully welded base
Driftwood and Espresso finishes
with umbrella hole



Durango Dining Tables
8773053-01 • 30D x 53W x 29H
with umbrella hole

Durango finish options:
gunmetal frame / grey faux wood
platinum frame / teak faux wood
bronze frame / teak faux wood
black frame/barnwood faux wood



Durango Dining Tables
8773030-01 30Dx37Wx29H
8773737-01 37D x 37W x 29H
with umbrella hole



New for 2019
Durango Community Table
8773076-01 • 30D x 76W x 29H
with umbrella hole



New for 2019
Durango Bar Height Table
8773361-01 • 33D x 61W x 40H
with umbrella hole



Durango Bar Table
8773333-01
33D x 33W x 40H
no umbrella hole



New for 2019
Caredo 5 Piece Dining Set

2174000-0122 • 40" round
iron grey frame / beechwood top
2173636-0122 • 36" x 36"
iron grey frame / beechwood top
2173636-0123 • 36" x 36"
iron grey frame / midnight top



Our folding table comes in 30x48 and 36x48 sizes, both offered with a solid metal top including umbrella hole. The folding mechanism can easily let top down for storing away or moving around for mobility when needed.

2223048-0150
(charcoal finish only)
30W x 48D x 29H
with umbrella hole

2223648-0150
36W x 48D x 30H
with umbrella hole
Meets ADA specifications.



2203048-01
Rectangle Table with Mesh Top
30W x 48D x 29H
with umbrella hole
Does not fold.
(charcoal, platinum and bronze finish)

Cortez Table

Our Cortez table is made of a High Pressure Laminate (HPL) which is designed to be resistant from burns, UV rays, stains, heat, and scratches. HPL is easy to clean, making these commercial table tops easy to maintain.

*available in bronze or graphite finishes



Rectangular Table
4443663-01
36 x 63 x 29H



Square Table
4443636-01
36 x 36 x 29H



Build Your Own Table

Plantation Prestige Commercial Furniture offers a wide variety of customizable table options that are suitable for any commercial setting. Choose your base, then choose your top and create one of hundreds of potential combinations!

Please contact your local sales representative for more information.



Frame Finish Options



Charcoal (50)



Platinum (70)



Bronze (20)

Werzalit® Top Options

Our commercial grade Werzalit solid tops are made using a patented process that combines wood, resins, and melamine to produce a unique high tech composite.



Black Granite (30)



Brushed Silver (10)



Rocky Road (60)



Driftwood (40)

Custom Solid Acrylic Table Tops

New for 2019

2413000 • 30" round
2413030 • 30" x 30"
2413600 • 36" round
2413636 • 36" x 36"
2413048 • 30" x 48"

- For 30" table tops, use base 2342700 or 2332700
- For 36" table tops, use base 2343700 or 2333700
- For 30" x 48" table top, use base 2353048

See table bases on page 26

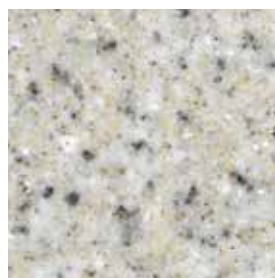
Plantation Prestige is pleased to offer a new composite, solid acrylic table top. These molded table tops are a great choice wherever durability, attractive appearance & performance are desired to enhance the outdoor seating space. These high quality commercial grade, solid acrylic tops are custom made in various sizes and colors, made to withstand the elements of the outdoor environment. Please contact your local sales representative for further details to place an order.

Features:

- Nonporous surface to keep dirt or contaminants from penetrating the top, makes top easy to clean
- Consistent color through the material thickness for maintaining an attractive appearance
- High resistance to UV fading in intense sun locations
- Resistance to freeze-thaw cycles



Acrylic Top Options



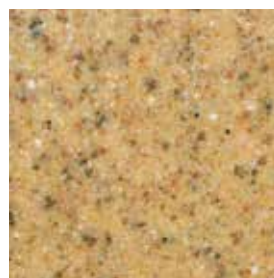
Brown Matrix (02)



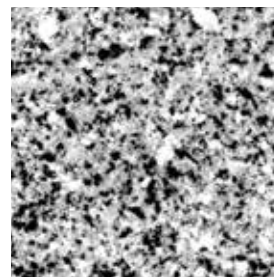
Brownstone (03)



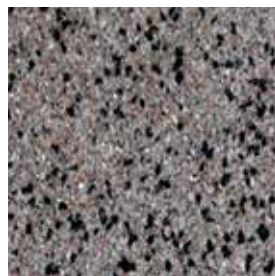
Cocoa (04)



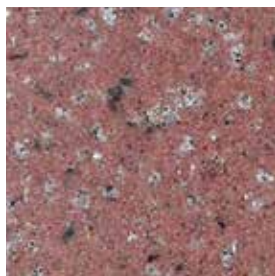
Golden Oak (05)



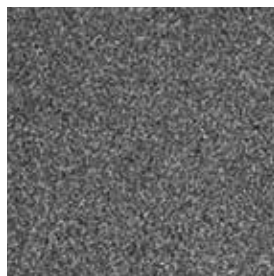
Black Matrix (06)



Lynne Star (07)



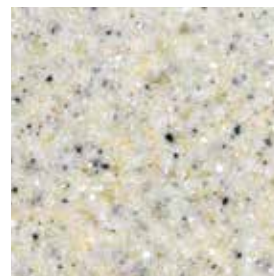
Pezza (08)



Riverstone (09)



Sueillia Green (11)



Wheat (12)

Café Tables



MICROMESH TOPS
 2202430-01 • 24" x 30" Rectangle
 2203030-01 • 30" x 30" Square
 2203000-01 • 30" Round



SOLID METAL TOPS
 2212430-01 • 24" x 30" Rectangle
 2213030-01 • 30" x 30" Square
 2213000-01 • 30" Round



WERZALIT® SOLID TOPS
 2313000-01 • 30" Round
 2313232-01 • 32" x 32" Square Top

Note: All table tops come with umbrella hole EXCEPT the 24" x 30" size



2342700-01
 Butterfly Café Base
 ~ BASE ONLY ~
 29H x 28 diagonal leg spread



2345700-01
 Bar Table Base
 ~ BASE ONLY ~
 39H x 28 diagonal leg spread



2332700-01
 Spun Café Base
 ~ BASE ONLY ~
 29H x 24 diameter base



2335700-01
 Spun Café Bar Base
 ~ BASE ONLY ~
 40H x 24 diameter base

Dining Tables



MICROMESH TOPS
 2203636-01 • 36" x 36" Square
 2203600-01 • 36" Round
 2204200-01 • 42" Round

42" Round tops are not recommended for use with bar table bases.



SOLID METAL TOPS
 2213636-01 • 36" x 36" Square
 2213600-01 • 36" Round



WERZALIT® SOLID TOPS
 2313636-01 • 36" x 36" Square
 2313600-01 • 36" Round
 2313248-01 • 32" x 48" Rectangle
 (to be used with 2353048)

Note: All table tops come with umbrella hole EXCEPT the 24" x 30" size



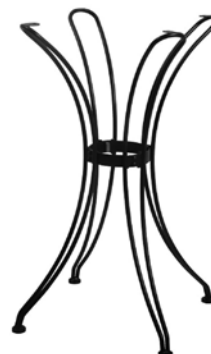
2343700-01
 Butterfly Dining Base
 ~ BASE ONLY ~
 29H x 32 diagonal leg spread



2333700-01
 Spun Dining Base
 ~ BASE ONLY ~
 29H x 28 diameter base



2334700-01
 Spun Bar Base
 ~ BASE ONLY ~
 40H x 28 diameter base



2344700-01
 Bar Table Base
 ~ BASE ONLY ~
 39H x 32 diagonal leg spread



2353048-01
 Dining T-base for 32x48 top
 ~ BASE ONLY ~
 29H x 32 leg spread

Stackable |

When we say our chairs are stackable, this means they will fit together easily for out of the way storage, taking up as little space as possible for your convenience. Within each collection, we have noted if the chairs are stackable.





Outdoor Heaters – Beautiful, Warm & Inviting

Pyramid Outdoor Heater

The four foot dancing flame inside the uniquely artistic, pyramid design illuminates the environment with a beautiful ambiance. It comes in two different finishes to fit any decor – stunning hammered bronze and high-grade stainless steel. These units will remain corrosion-free for years to come. It also comes fully assembled with a complimentary wheel kit making it easy to reposition and store. Each unit comes equipped to handle propane gas (tank not included).

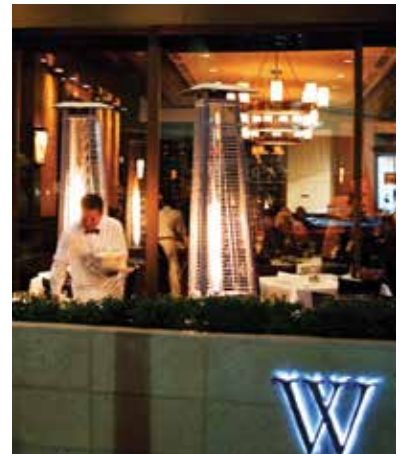
- 8 feet tall
- Propane (tank not included)
- 38,000 BTU
- Shatter resistant borosilicate glass
- Easy start electronic ignition
- Safety shut-off valve
- Protective, safe-to-touch grill
- Available in two finishes
- 1 year limited burner warranty
- Consumes less energy than comparable units



2222-01 Hammered Bronze



2233-01 Stainless Steel



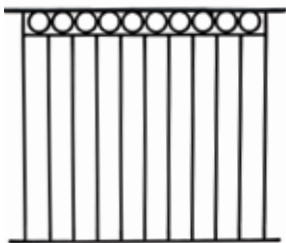
Heaters offered by Plantation Prestige are intended for commercial use, made with the highest grade of steel and commercially rated parts. They both come with a warranty, unlike some purchased through a retail outlet.



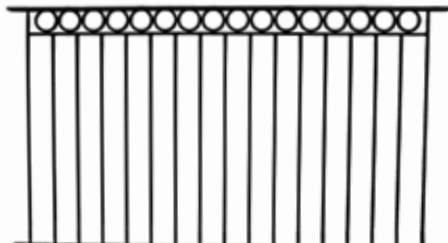


Fencing

Plantation Prestige “portable” fencing is an innovative design that offers a unique way of fencing-in any outdoor patio area. Plantation Prestige fencing is designed to create many configurations, whether it is a 90 degree angle or a simple straight line. Each panel pivots at the connecting post to create the desired angle, yet is still sturdy enough to offer a solid steel, fencing structure. Fencing can be secured into the surface IF desired with hardware that comes with each panel. Being structurally sound when fully connected, easy to assemble and very affordable, Plantation Prestige fencing is the ideal choice.



4 Ft. Section
9975000-02
Assembled dimensions:
2D x 47.5W x 43H



6 Ft. Section
9976000-02
Assembled dimensions:
2D x 71.5W x 43H



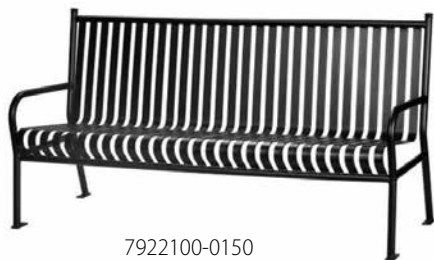
End Post
9977000-02
Assembled dimensions:
2D x 20W x 43H



Connecting Post
9978000-02
Assembled dimensions:
2D x 20W x 43H

Accessories

We are pleased to offer our heavy duty benches and waste receptacle, built for any outdoor public area. Each piece of our accessories collection is constructed of commercial-grade steel, and finished with a durable powder coated charcoal finish.



7922100-0150
6' Bench
72W x 27D x 38H



2552000-0250
Bench
18D x 50W x 17H



End view
of Bench



7927800-0250
Trash Receptacle
with Rain Bonnet
27.5W x 27.5W x 31H



48 lb. Umbrella Base
2239848-0150 • Black



48 lb. Umbrella Base
2239848-0170 • Platinum



81 lb. Freestanding Umbrella Base
2239881-0150 • Black
2239881-0170 • Platinum



150 lb. Freestanding
Umbrella Base
Galvanized Steel Plate
2230150-0170 • Matte Silver



75 lb. Freestanding
Umbrella Base
Steel plate base with wheels
2239875-0150 • Black
2239875-0170 • Matte Silver



Modular Cross Base
for Cantilever Umbrellas
Holds 2-3 16" pavers
per quadrant
2239816-0150



Direct Surface Mount for
Cantilever Umbrellas
2239812-0150 • Gloss Black



In-Ground Mount for
Cantilever Umbrellas
2239818-0170 • Silver



Umbrellas |



6' Square Aluminum Market Umbrella with Fiberglass Ribs and Manual Lift
9602-01 • Black Pole



9' Octagon Umbrella with Fiberglass Ribs, Pulley System w/Locking Pin

- 1.5" diameter two piece aluminum
- 1/8" thickness pole
- Heavy gauge pulley system for easy opening and closing
- Reinforced four-layer pockets prevent fabric from tearing
- Stainless steel hardware

9919-01 • Silver Pole
9920-01 • Black Pole
Fabric options are shown on page 33



7' Octagonal Aluminum Market Umbrella with Fiberglass Ribs and Manual Lift
9720-01 • Black Pole
9719-01 • Platinum Pole

Canvas
Antique Beige
5422

Canvas
Heather Beige
5476

Canvas Teak
5488

Canvas
Bay Brown
5432

Canvas Henna
5407

Canvas Brick
5409

Canvas
Jockey Red
5403

Canvas
Tangerine
5406

Canvas
Sunflower
5457

Canvas Wheat
5414

Canvas Parrot
5405

Canvas
Forest Green
5446

Canvas Teal
5456

Canvas Aruba
5416

Canvas
Pacific Blue
5401

Canvas
Sapphire Blue
5452

Canvas Navy
5439

Canvas Black
5408

Canvas
Charcoal
54048

Canvas Granite
5402





11' Octagon Umbrella
All Aluminum Frame Polished Silver Pole and Ribs, Pulley System w/Locking Pin

- 1.5" diameter two piece aluminum
- 1/8" thickness pole
- Heavy gauge pulley system for easy opening and closing
- Reinforced four-layer pockets prevent fabric from tearing
- Stainless steel hardware

9119-01 • Polished Silver



11' Octagon Cantilever Umbrella
Matte Silver Pole, Crank Lift Tilt System

- Full 360 degree rotation, with countless tilt angles for providing shade from the sun any time of the day
- Crank lift designed for smooth and effortless operation in any commercial application
- The extruded aluminum mast is strong and durable, built for strength in any commercial environment
- High impact resin critical joints give great flexibility where needed

9019-01 • Matte Silver

Multiple mounting options available. See page 31.

- BGA: Burgandy
- BAK: Black
- BNA: Brown
- CGA: Cadet Grey
- CHGA: Charcoal
- CPA: Capri
- CRA: Coral
- FGA: Forest Green
- LNA: Linen
- LRA: Logo Red
- NBA: Navy Blue
- ORA: Orange
- PBA: Pacific Blue
- PTA: Pistachio
- TQA: Turquois
- TTA: Toast
- WHA: White
- YLA: Sunflower
- TRA: Terracotta
- YSA: Yellow Stripe
- BKSA: Black Stripe
- BSA: Blue Stripe
- OSA: Orange Stripe
- RSA: Red Stripe
- TQSA: Turquoise Stripe



Logo Your Umbrella!

Ask your rep about customizing your umbrella with Sunbrella® fabrics or by adding your logo



Closeouts

Cylo

Cylo Dining Chair
2231100-0450
26D X 25W x 33H
Charcoal only



Cylo Bar Stool
2230300-0250
26D X 20.5W x 43.5H
Charcoal only



Metro

Metro Dining Chair
2331100-0450
2331100-0470
25D X 21.75W x 33H
Charcoal and platinum only



Metro Bar Stool
2330300-0450
2330300-0470
19.5D X 21W x 45H
Charcoal and platinum only



SoHo

SoHo Side Chair
2270700-0420
2270700-0470
16D X 18W x 32H
All finishes



Terrace

Terrace Dining Chair
2011100-0450
23D X 25W x 38H
All finishes



Terrace Side Chair
2010700-0450
23D X 21W x 38H
All finishes



Terrace Bar Stool
2010300-0250
22D X 23.5W x 47.5H
All finishes



Salernos

Salernos Dining Chair
2651100-0442
22D x 21.5W x 35H
(graphite/gray
weave seat and back)



Fino

Fino Dining Chair
2641100-0433
21Dx22.75WX34.5H
(champagne/mocha
weave seat and back)



Barkley

Barkley Barstool
2150300-0260
Java only



Topeka

Topeka Dining Chair
2551100-0450
22D x 21W x 32H
Charcoal only



Topeka Bar Stool
2550300-0450
22D x 19W x 43H
Charcoal only



Manhattan

Manhattan Dining Chair
2031100-04
23.5D x 24.5W x 36.5H
Platinum only



Manhattan Bar Stool
2030300-02
23.5D x 22.5W x 43H
Platinum only



Tables



2345731-01
30" Square Butterfly Bar
Table with Mesh Top
30W x 30D x 40H

2344737-01
36" Square Butterfly Bar
Table with Mesh Top
36W x 36D x 40H



2345730-01
30" Round Butterfly Bar
Table with Mesh Top
30W x 40H

2344736-01
36" Round Butterfly Bar
Table with Mesh Top
36W x 40H



2192727-0150
Charcoal only
Solid Stamped Folding Table
27W x 27W x 29H

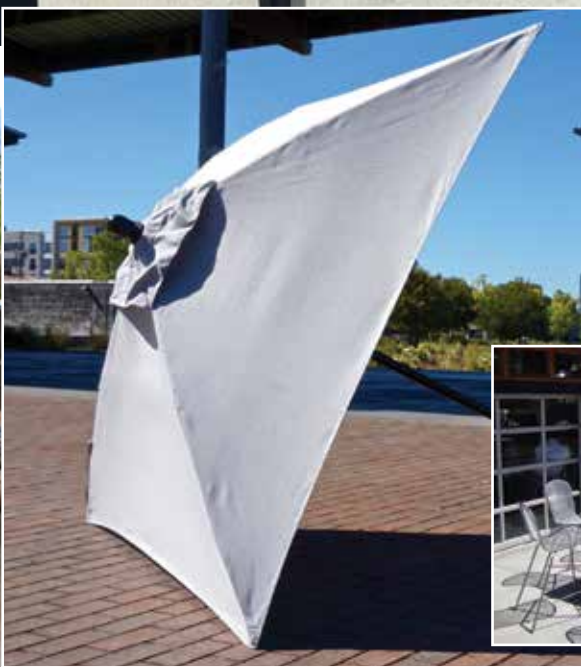
Madrid



Madrid Bar Table
87536BT-0140 36W x 40H
(chocolate finish only)
with umbrella hole



8750300-0240
Madrid Bar Stool
20.5W x 25D x 47H



PLANTATION PRESTIGE COMMERCIAL FURNITURE USE LIMITED WARRANTY



PLANTATION PRESTIGE COMMERCIAL FURNITURE FRAME WARRANTY

On frames manufactured for commercial use, Plantation Prestige Commercial Furniture extends a 3 year limited warranty to the original end use purchaser as a sign of our dedication to the highest possible quality standards. The warranty is non-transferable and is designed to cover the furniture under normal commercial utilization. This warranty is void if the furniture has been abused, inadequately maintained, or altered in any way. The warranty also becomes void in the event the furniture has been damaged by acts of nature, calamity and/or misuse.

The extent of the warranty is to cover the material and/or workmanship of the furniture frame and welds. This warranty does not apply to umbrellas, cushions, alternative tops or fabrics.

PLANTATION PRESTIGE COMMERCIAL FURNITURE WARRANTY CUSHIONS, HEATERS, UMBRELLAS, AND ALTERNATIVE TOPS

Plantation Prestige Commercial Furniture extends a 1 year limited warranty to the original end use purchaser as a sign of our dedication to the highest possible quality standards. This warranty is non-transferable and is designed to cover the construction of the cushion, umbrella, heaters, or alternative top under normal commercial use. This warranty is void if the cushion, umbrella or alternative top has been abused, inadequately maintained or altered in any way. The warranty also becomes void in the event the cushion, umbrella, or alternative top has been damaged by acts of nature, calamity and/or misuse. This warranty does not apply to fading or discoloration of the fabrics. (Please see page 35 for additional warranty of 9' or larger umbrellas.)

If the product is proven to be factory defective, as covered by the warranty, Plantation Prestige Commercial Furniture will repair or replace it at the factory's discretion. In the event that the product has been discontinued, Plantation Prestige Commercial Furniture may replace the product with a similar item. This service will be performed at the manufacturing plant. All shipping, delivery and packaging costs are the sole responsibility of the owner of the furniture.

TO PLACE AN ORDER

Please submit purchase orders through your local sales rep or contact Plantation Prestige directly for information regarding placing an order. Purchase orders must include part numbers, frame finish, fabric choice, net purchase cost and freight. All freight costs must be applied to order if not being shipped "freight collect." Plantation Prestige uses multiple shipping locations. Please ask your sales rep if specifics are needed. Full payment required for all orders prior to shipping, unless credit terms have been established.

TO MAKE A CLAIM

To make a claim under this warranty, please contact Plantation Prestige Commercial Furniture. All claims for this service must be accompanied by a proof of purchase, photos of defective product and a detailed description of the defect. All Custom Orders are considered final, and deemed not refundable; however, warranty claims may be submitted following the same guidelines as stated herein.

CUSTOM ORDERS:

The term "Custom Orders" applies to all items not stocked on a regular basis by Plantation Prestige Commercial Furniture. Items that are special ordered, together with coordinating fabric items, namely cushions, umbrella fabrics not carried in-house, and ALL items containing logos or any alteration of size. Custom Order items are not refundable; however, claims for defect may be made to our claims department following our standard guidelines.

FREIGHT CLAIMS:

For products shipped 3rd party by Plantation Prestige, all freight claims must include correct paper work from delivery. All claims must be filed within 48 hours so please inspect product upon arrival.

**PLANTATION PRESTIGE COMMERCIAL FURNITURE
CUSTOMER SERVICE DEPARTMENT
5510 HWY 280, Suite 207
Birmingham, AL 35242
205-593-4978
custserv@plantationprestige.com**

visit us at plantationprestige.com

